

Patented
in Japan

For ponds in parks, gardens, shrines, temples, or golf courses,
factory grit chambers or moats!

®

Circulating Biotron Method

Better transparency

Improved quality
of water and bottom sediment

Odor removal

Circulating Biotron BT-100 is compact and energy efficient. It can easily be installed in ponds of any size or shape due to its adjustable cable length. Automatic injection of cleaning agents will quickly improve transparency and make the water environment fresh and clear. See clear results of water purification at various locations such as castle moats, factory grit chambers and water gardens as well as ponds in parks, gardens, shrines, temples, or golf courses. Installation will take only half a day. Maintenance and management can be done by customers on their own after installation.

We have received excellent feedback from purifying ponds in parks, gardens, shrines and temples nationwide.

Before



After



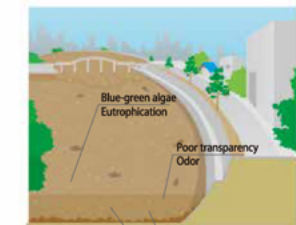
■ Circulating Biotron Method's characteristics

- Lighter and more portable than traditional machines. Easy to install and manage.
- The Circulation equipment is installed inside the pond. You can replenish and manage the cleaning agents on your own with our advice upon installation.
- The controller requires a power supply of 100V. Compact and almost silent.

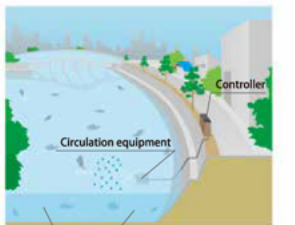
*The equipment cannot be used for a pond with less than 100 tons of water.

For smaller ponds, please use makeup water, filtration and/or Algae control agents instead.

Concurrent use of biomaterial Aqualift 1600PN/LN will degrade Nitrogen and hazardous substances that are a cause of eutrophication. It will also revitalize the natural water purification effect by the food chain as it also degrades sulfide and organic matters contained in the bottom sediment and brings aquatic organisms such as microorganisms and protozoans back.



*Hydrogen sulfide and methane generated when sludge accumulates in the bottom sedimentation make the environment uninhabitable for aquatic insects and organisms, resulting in the food chain's inability to aid in water purification.



*Circulating Biotron will improve water quality in terms of ammonia, nitrogen, phosphorus, ss, hydrogen sulfide, methane, etc. and become suitable for agricultural use or water treatment plant.

■ Pond in a garden



■ Pond in a shrine / temple



■ Moat



■ Facilities and parks



■ Please visit our website for more testimonials from Circulating Biotron Method customers and photos showing conditions before and after the use of our system.



Aqua Service Co., Ltd.

AQUA
水質・環境
改善の改善

4-7-19 Sumiyoshi,
Hakata-ku, Fukuoka-shi, Fukuoka 812-0018

■ Contact

TEL 092-475-4131

FAX 092-475-4133

Aqua Service Co., Ltd. : Official Brochure

Contact via e-mail : info2@aqua-s.jp

Official Website <http://www.aqua-s.jp/>

Aqua Service

Search

Please see reverse side.

For ponds in parks, gardens, shrines, temples, or golf courses,
factory grit chambers or moats!

Circulating Biotron Method

● Circulating Biotron BT-100 customer testimonials.



Ponds in a theme park (approx. 5,000t)

[Simple Circulating Biotron BT-100] Customer B from Shizuoka Prefecture
We used the Circulating Biotron for ponds where we keep waterfowl and animals that live in our theme park. To be honest, we did not expect it to work as remarkably as it did. I have never seen the ponds this clean in almost the full 20 years that I have been working at this park. All the workers here were surprised. *90cm of transparency indicated.

A pond in a theme park (approx. 300t)

[Simple Circulating Biotron BT-100] Customer F from Hyogo Prefecture
The equipment gave us a pleasant surprise. We did not expect it to clean the pond as well as it did. Water replacement and cleaning did not stop the blue-green algae from coming back repeatedly and degrading the transparency. We are, of course, happy that it cleaned the pond but what pleased us most was that we could see the carp in the pond and more families started to come to feed them.

A pond at a temple (approx. 200t)

[Simple Circulating Biotron BT-100] Customer M from Kyoto Prefecture
Our pond used to be cloudy and covered with a lot of foam, but the equipment cleaned the pond and I could see a clear surface for the first time in a long time.

A moat in a park (approx. 8,000t)

[Simple Circulating Biotron BT-100] Customer W from Yamaguchi Prefecture
The moat in our park is located in an area with a lot of tourist traffic. It used to spoil the scenery because an oil film on the surface marred its transparency so that no one could see the carp in the water. Plus, the blue-green algae gave off an offensive odor. The Circulating Biotron improved the transparency, resulting in a good view of the carp and increased the number of visitors to the park to feed them. We are now looking forward to welcoming even more visitors.

Factory sedimentation tank (approx. 300t)

[Simple Circulating Biotron BT-100] Customer H from Ehime Prefecture
Wastewater containing a lot of coal ash caused by in-house power generation is captured in a sedimentation tank before being discharged. But we could not discharge the wastewater, as the coal ash did not settle well in the tank. We were shocked to see the tank cleaned the next day after installing the Circulating Biotron and we could discharge the wastewater without any problem! Our headache is gone.

A pond in a welfare facility's park (approx. 800t)

[Simple Circulating Biotron BT-100] Customer K from Hyogo Prefecture
The electricity and water bills were several hundred thousand yen when we were using a large filtration machine to clean the pond. But the Circulating Biotron has saved us money since its installation.



Controller



Circulation machine



Controller's cover

Please visit our website for more testimonials from our customers.

Circulating Biotron BT-100

Energy and space efficient. Adaptable to various situations.



Controller

Controls operation of the circulation equipment and feeds cleaning agent.
■Size: Approx. 86cm (height) x 58cm (width) x 55cm (depth)
■Weight: Approx. 20kg ■Main power source: 100V
■Chemical feeding pump: 15W

Patented in Japan



Circulation equipment

Creates gentle whirrs to agitate the entire pond and spread the cleaning agent.
■Size: Approx. 24cm (height) x 37cm (width) x 58cm (depth)
■Weight: Approx. 11kg
■Submerged pump: 100V 150W

Reference retail price : 450,000 yen - 550,000 yen

(The price is subject to selection of electric cable and submerged pump depending on the pond and installation location.)

*An extra charge will be incurred for installation and initial adjustment.

Algae control Agent

● Please check our website for information about "B-50" and "Aqua-briquette N" for algae prevention, bacteria eradication and water quality improvement in fountains or water containers without aquatic organisms.



B-50



Aqua-briquette N



● For small ponds and garden ponds, please check our website for information about filtration, a list of Algae control agents, and manually spread cleaning agents.

List of Algae control agents

Please check our website for more details.

AQUA
水質・環境
福祉の改善

Aqua Service Co., Ltd.

4-7-19 Sumiyoshi,
Hakata-ku, Fukuoka-shi, Fukuoka 812-0018

■ Contact

TEL 092-475-4131
FAX 092-475-4133

Contact via e-mail : info2@aqua-s.jp

Official Website

<http://www.aqua-s.jp/>

Aqua Service

Search